

Considering A CAREER IN PUBLIC HEALTH?

Public health focuses on prevention and wellness.



WHAT IS PUBLIC HEALTH?

Public health is the science of protecting and improving the health of families and communities through:

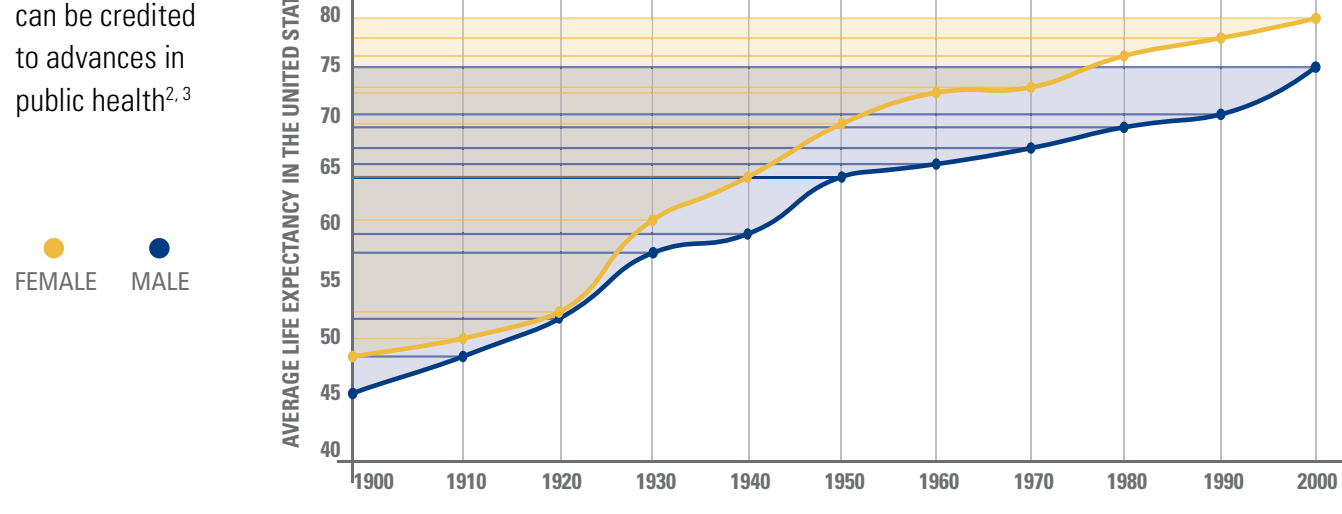
- Promotion of healthy lifestyles
- Research for disease and injury prevention
- Detection and control of diseases

EVERY \$1 SPENT ON PREVENTION

SAVES \$5.60 IN HEALTH SPENDING¹

AVERAGE LIFE EXPECTANCY IN THE U.S. INCREASED BY 30 YEARS IN THE 20TH CENTURY

25 of those years can be credited to advances in public health^{2,3}



WHAT DOES PUBLIC HEALTH DO?

Public health is responsible for many aspects affecting global health, such as keeping our food and water supply safe, containing outbreaks of infectious diseases, informing policy-making and helping remove disparities in access to healthcare.

A FEW THINGS YOU CAN THANK PUBLIC HEALTH FOR:



THE BIRTH RATE AMONG TEENS **DROPPED 46%** FROM 2007 TO 2015⁴



WATER FLUORIDATION CONTINUES TO REDUCE TOOTH DECAY BY **20-40%**⁵



THE PERCENTAGE OF ADULTS WHO SMOKE CIGARETTES HIT AN ALL TIME LOW IN 2015 (**15%**)⁶

RECOMMENDED CHILDHOOD VACCINES THROUGH AGE SIX SAVE AN ESTIMATED

42,000 LIVES EVERY YEAR IN THE UNITED STATES ALONE⁷



THERE IS STILL MORE WORK TO BE DONE⁸



ACCESS TO CLEAN WATER



MATERNAL, INFANT & CHILD HEALTH



CRISIS PREPAREDNESS



REPRODUCTIVE & SEXUAL HEALTH



NUTRITION, PHYSICAL ACTIVITY & OBESITY



ACCESS TO HEALTH SERVICES



SOCIAL DETERMINANTS



MENTAL HEALTH



INJURY & VIOLENCE



ENVIRONMENTAL QUALITY



ORAL HEALTH



PREVENTION MEASURES

STARTING YOUR CAREER IN PUBLIC HEALTH

MPH

GRADUATE DEGREES

The Master of Public Health (MPH) degree is the most common graduate public health degree awarded by CEPH-accredited schools and programs of public health and is designed for those seeking a professional career in public health.¹¹

**BSPH
BA
BS**

UNDERGRADUATE DEGREES

Many schools offer undergraduate degree programs in public health, but it's not necessary for graduate study in the field – public health students come from a wide variety of educational backgrounds.

**PHD
DRPH
SCD**

DOCTORAL DEGREES

The PhD and ScD degrees prepare students for teaching and research, while the DrPH focuses on the professional and practical aspects of the field.

CPH

CERTIFIED IN PUBLIC HEALTH CREDENTIAL

The Certified in Public Health (CPH) credential is voluntary for public health professionals. Public health students/alumni of a school or program of public health accredited by the Council on Education for Public Health (CEPH) and those with five years of experience in public health are eligible to sit for the CPH exam.

3 FAST GROWING PUBLIC HEALTH CAREERS



BIOSTATISTICIAN

15% OR HIGHER

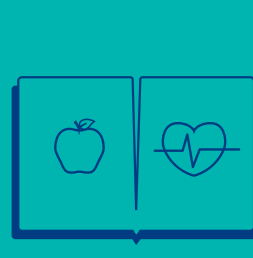
NATIONALLY PROJECTED JOB GROWTH FROM 2016 TO 2026⁹



MEDICAL & HEALTH SERVICES MANAGER

20%

NATIONALLY PROJECTED JOB GROWTH FROM 2016 TO 2026¹⁰



HEALTH EDUCATORS & COMMUNITY HEALTH WORKERS

16%

NATIONALLY PROJECTED JOB GROWTH FROM 2016 TO 2026¹²

OTHER PUBLIC HEALTH CAREERS



EPIDEMIOLOGIST



GLOBAL HEALTH PROFESSIONAL



OCCUPATIONAL HEALTH & SAFETY SPECIALIST



RESEARCH ANALYST



HEALTH POLICY ADVISOR



DISEASE INVESTIGATOR



PUBLIC HEALTH ANALYST



PUBLIC HEALTH POLICY COORDINATOR



PUBLIC HEALTH INFORMATION OFFICER



EMERGENCY PREPAREDNESS & RESPONSE COORDINATOR



The Master of Public Health (MPH) degree program is designed to challenge and change the way you think about the health of population groups, while preparing you to lead projects and teams that implement solutions for a diverse range of public health programs and policies.

Whether you are new to public health or are an existing healthcare professional, Chamberlain's MPH degree program can help position you to reach your goals.

Visit chamberlain.edu/mph for more information.

1 American Public Health Association, <https://www.apha.org/news-and-media/multimedia/infographics/public-health-infographic>
 2 Centers for Disease Control and Prevention, <https://www.cdc.gov/mmwr/preview/mmwrhtml/00056796.htm>
 3 Life Tables for the United States Social Security Area 1900-2100, https://www.ssa.gov/oact/NOTES/as120/images/LD_fig2a.html
 4 National Center for Health Statistics, <https://www.cdc.gov/nchs/products/databriefs/db259.htm>
 5 American Dental Association, http://www.ada.org/~media/ADA/Member%20Center/Files/fluoridation_facts.ashx (page 9)
 6 Centers for Disease Control and Prevention, https://www.cdc.gov/tobacco/data_statistics/fact_sheets/adult_data/cig_smoking/index.htm
 7 Centers for Disease Control and Prevention, <https://www.cdc.gov/about/pdf/cdc-recent-accomplishments.pdf> (page 3)
 8 Healthy People 2020, <https://www.healthypeople.gov/2020/leading-health-indicators/2020-LHI-Topics>
 9 O*Net <https://www.onetonline.org/link/summary/15-2041.01>
 10 Bureau of Labor Statistics, U.S. Department of Labor, *Occupational Outlook Handbook*, Medical and Health Services Managers, on the Internet at <https://www.bls.gov/ooh/management/medical-and-health-services-managers.htm> (visited November 22, 2017).
 11 <https://www.aspph.org/study/>
 12 Bureau of Labor Statistics, U.S. Department of Labor, *Occupational Outlook Handbook*, Health Educators and Community Health Workers, on the Internet at <https://www.bls.gov/ooh/community-and-social-service/health-educators.htm> (visited November 26, 2017).